

US VACUUM PUMPS

2009/2010 VACUUM PRODUCTS CATALOG

“ Vacuum Equipment for the process industry”



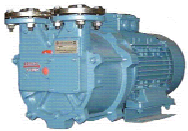
ROTARY VANE VACUUM PUMPS

PAGE 3



ROTARY PISTON VACUUM PUMPS

PAGE 10



LIQUID RING VACUUM PUMPS

PAGE 12



DRY VACUUM PUMPS

PAGE 18



VACUUM GAUGES

PAGE 20



FILTERS & TRAPS

PAGE 24



FLUIDS & OILS

PAGE 31



U.S. VACUUM

About Us



Your single source for Industrial Vacuum equipment, supplies and support

Company Profile: US Vacuum Pumps LLC. is a FULL SERVICE vacuum company specializing in the engineering, sales and servicing of industrial vacuum process equipment. Our comprehensive knowledge of the industry ensures that you will be provided with the right equipment at the right price. To service our growing list of satisfied customers, we operate two regional offices in **CHICAGO & DALLAS** to supply the immediate service and support our customers need and require.

Product Selection: The scope of our product offerings include new pumps, used pumps, rental pumps, maintenance items, accessories, engineering assistance and inventory warehousing. With our vast access to used pumps and repair services we offer effective LOW COST solutions to your vacuum needs.

Payment Methods: Payment terms are NET 30 days with approved credit. We accept corporate purchase orders, MasterCard & VISA Credit cards, and wire transfer of bank funds.

PHONE: 1-888-416-7366

FAX: 1-877-416-7599

Email: usvacuum@earthlink.net

Web: www.usvacuumpumps.com

ROTARY VANE VACUUM PUMPS

SINGLE STAGE

- Vacuum to 0.5 mm Hg (29.9 Hg)



Vane Pumps- Single Stage

TORR VAC SERIES

21-491 CFM

Vacuum to: 0.5 Torr



Model TV 25B
Displacement 21 CFM
Ultimate Pressure .5 Torr

TorrVac "B" Series Rotary Vane Vacuum Pumps

TorrVac vacuum pumps are Single Stage Rotary Vane Air-Cooled vacuum pumps capable of producing an ultimate vacuum of .5 Torr.

All Torr-Vac pumps features a compact, simple design; quiet air-cooled operation; Direct Drive; built-in oil mist eliminator; anti-suckback valve. These features result in easy installation and low maintenance; no water requirements; no belts or gears to wear or loosen; 99.9% oil free exhaust and high water vapor handling capabilities.

TorrVac pumps are ideally suited for use in applications such as vacuum drying, impregnation, food packaging and processing, thermo-forming, vacuum hold-down and meat packing.



Model TV 40B & 63B
Displacement 28/45 CFM
Ultimate Pressure .5 Torr

Technical Data

Pump Model		TV25B	TV40B	TV63B	TV100B	TV160B	TV250B	TV630B	
Displacement	CFM	21	28	45	70	112	176	491	
Pumping Speed	CFM	18	25	41	65	108	168	456	
Ultimate Vacuum	Torr	29.9" Hg (0.50 mm Hg)							
Noise Level	dba	64	67	68	70	76	76	84	
Motor	Hp	1.5	2	3	5	7.5	10	25	
Pump Speed	RPM	1725							1170
Oil Capacity	Qt.	1	3	3	5	5.3		16	
Inlet, NPT (F)	in.	1.25				2	2	3	
Exhaust, NPT (F)	in.	1.25				2	2	3	
Pump Weight	Lbs.	62	100	134	190	330	430	1530	



Model TV 100B
Displacement 70 CFM
Ultimate Pressure .5 Torr

Prices

Model#	CFM	HP	Motor Description	TVH Price
TV-25B	21	1.5	3/60/230-460	\$2,750
TV-25B	21	1.5	1/60/115-230	\$2,890
TV-40B	28	2	1/60/115-230	\$2,890
TV-40B	28	2	3/60/230-460	\$3,060
TV-63B	45	3	3/60/230-460	\$3,770
TV-100B	70	5	3/60/230-460	\$4,470
TV-160B	112	7.5	3/60/230-460	\$7,380
TV-250B	176	10	3/60/230-460	\$8,610
TV-630B	491	25	3/60/230-460	\$25,000



Model TV 250B
Displacement 176 CFM
Ultimate Pressure .5 Torr

HIGH VACUUM PUMPS

CP SERIES

5-8-15 CFM

Vacuum to: 29.9" Hg

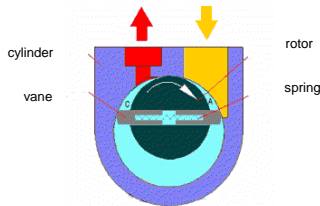
US Vacuum "CP" series vacuum pumps are Single Stage Rotary Vane Air-Cooled vacuum Pumps capable of producing an ultimate vacuum to 29.9" Hg.

All CP pumps features a compact, simple design; quiet air-cooled operation; direct drive 110V motor; power cord and on-off switch. The CPS-15B includes as standard an integral oil mist exhaust filter for oil free discharge. As with all CP pumps require no water for cooling; no belts or gears to wear or loosen; and light weight for portability.

All CP pumps are ideally suited for use in applications such as vacuum bagging, composite molding, vacuum hold-down, degassing and sampling.

FEATURES

- Ultimate vacuum of 29.9" Hg
- Low Cost
- Compact design
- Air-cooled



CPS-5B



CPS-8B



CPS-15B

MODEL		CPS-5B	CPS-8B	CPS-15B
Displacement	CFM	5	8	15
Ultimate Vacuum	Torr	29.9" Hg		
Noise Level	dba	54	56	72
Motor	Hp	1/3	1/2	1
Pump Speed	RPM	1750	1750	3500
Oil Capacity	ml	250	600	500
Inlet Connection	inches	3/8"		1/2"
Dimensions (inches)	L x W x H	13.25 x 5.5 x 10	15 x 5.75 x 11	17.25 x 11 x 10.5
Pump Weight	Lbs.	23	44	42
PRICE	USD	\$350	\$450	\$1,080
OPTIONAL EXHAUST FILTER			\$95	Standard
OPTIONAL INLET FILTER			\$75	
OPTIONAL VACUUM GAUGE			\$35	

ROTARY VANE VACUUM PUMPS

TWO-STAGE

- Vacuum to 0.0002 mm Hg



Vane Pumps- Two- Stage

US VACUUM

3.5 - 28 CFM Vacuum to: 0.5 Microns



USV Series Rotary Vane Vacuum Pumps

USV pumps are Two-Stage Rotary Vane Air-Cooled vacuum pumps capable of producing an ultimate vacuum of .0005 mm Hg. All pumps come with an anti-suckback valve, gas ballast valve, ISO/KF connections, base & rubber feet. Single phase pumps come with 2 meter 120V power cord & on-off switch.

USV pumps are ideally suited for use in applications such as Air Conditioning & refrigeration evacuation, vacuum ovens, backing turbomolecular pumps, degassing, cylinder filling, sampling applications and others.

ALL the pumps are assembled with Baldor brand motors.

Technical Data

MODEL		100	200	400	600	800
Displacement	CFM	3.5	7	14	21	28
Ultimate Vacuum	Torr	.0005 mm Hg				
Noise Level	dba	54	56	56	57	58
Motor	Hp	1/2	1/2	1	2	2
Pump Speed	RPM	1800				
Oil Capacity	Qt.	.53	.62	1.5	2.9	2.4
Inlet, ISO-KF	mm	KF25			KF40	
Pump Weight	Lbs.	50	53	70	114	117

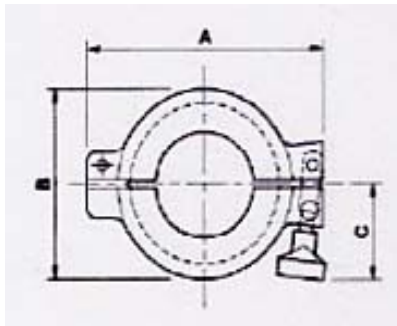
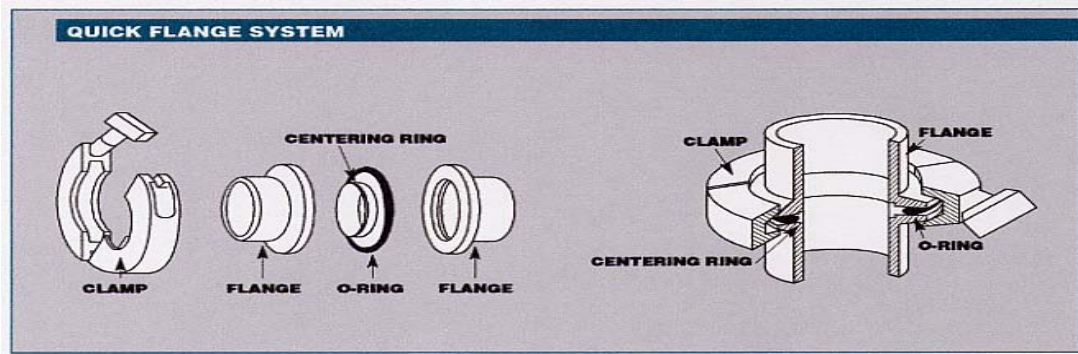
Prices

Model#	CFM	Price
US100	3.5	\$2,074
US200	7	\$2,258
US400	14	\$2,860
US600	21	\$3,890
US800	28	\$4,574

Vane Pumps- Two- Stage

KF/ISO FITTINGS

ISO components (flange system designed in accordance with ISO-International Standards Organization) are an economical, convenient and simplified means of constructing custom vacuum systems. The system consists of two identical 360 degree rotatable flanges, a centering ring which supports the elastomers O-ring and a quick acting clamp which compresses the sealing ring between the two flanges.

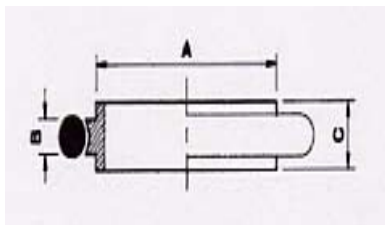


Swing Clamp, Aluminum (Wing Nut)

SIZE	PART#	DIMENSIONS (mm)		PRICE
		A	B	
KF 10 & 16	90512403	56.9	42.9	\$ 10.80
KF 25	90514403	70.1	55.1	\$13.60
KF 40	90516403	86.1	70.1	\$16.80
KF 50	90517403	110	94.1	\$25.40

Centering Ring Assembly (Buna O-Ring)

SIZE	PART#	DIMENSIONS (mm)		PRICE
		A	B	
KF 10	9051136	12	3.9	\$ 8.80
KF 16	90512396	17	3.9	\$ 8.80
KF 25	90514396	26	3.9	\$ 10.40
KF 40	90516396	41	3.9	\$15.20
KF 50	90517396	52	3.9	\$18.40

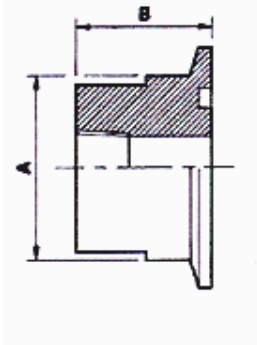


Centering Ring Assembly (Viton O-Ring)

SIZE	PART#	DIMENSIONS (mm)		PRICE
		A	B	
KF 10	10511395	12	3.9	\$ 12.40
KF 16	10512395	17	3.9	\$12.50
KF 25	10514395	26	3.9	\$14.70
KF 40	10516395	41	3.9	\$19.60
KF 50	10517395	52	3.9	\$25.00

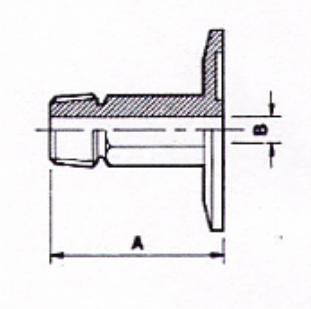
Vane Pumps- Two- Stage

KF/ISO FITTINGS



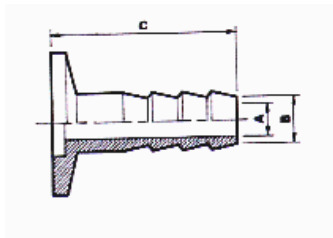
Adapter, KF to NPT (Female) 304L stainless

SIZE	PART#	DIMENSIONS (mm)		PRICE
		A	B	
KF 16 to 1/8"	90501106	20	19.1	\$35.00
KF 16 to 1/4"	90501107	20	19.1	\$35.00
KF 25 to 1/8"	90501223	28	19.1	\$37.00
KF 25 to 1/4"	90501224	28	19.1	\$37.00
KF 40 to 1/8"	90501309	45	25.4	\$49.00
KF 40 to 1/4"	90501310	45	25.4	\$49.00



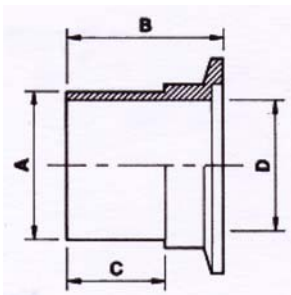
Adapter, KF to NPT (Male) 304L stainless

SIZE	PART#	DIMENSIONS (mm)		PRICE
		A	B	
KF 16 to 1/8"	90501102	20	4.7	\$56.00
KF 16 to 1/4"	90501103	20	7.1	\$59.00
KF 25 to 1/8"	90501217	28	4.7	\$56.70
KF 25 to 1/4"	90501218	28	7.1	\$62.00
KF 25 to 1/2"	90501219	45	11.9	\$66.00
KF 25 to 3/4"	90501220	45	15.9	\$83.50
KF 40 to 1/4"	90501303	50	7.1	\$84.00
KF 40 to 1/2"	90501304	75	11.9	\$70.00
KF 40 to 3/4"	90501305	75	15.9	\$80.00
KF 40 to 1"	90501306	75	25	\$99.00



Nozzel, KF to 12 m ID Tubing (Aluminum)

SIZE	PART#	DIMENSIONS (mm)		PRICE
		A	C	
KF 10	10511645	7	40	\$25.00
KF 25	10514645	7	40	\$30.00
KF 40	10516645	7	40	\$35.00



Hose Adapter, KF to PVC Hose

SIZE	PART#	DIMENSIONS (mm)		PRICE
		A	B	
KF 10 to 1/2" ID Hose	10504081	12.7	32	\$36.00
KF 16 to 1/2" ID Hose	10504104	12.7	32	\$36.00
KF 16 to 3/4" ID Hose	10504105	19.1	32	\$39.00
KF 25 to 1" ID Hose	10504225	25.4	38.1	\$47.00
KF 40 to 1-1/2" Hose	10504326	38.1	50	\$49.00
KF 40 to 2" ID Hose	10504352	47.4	55	\$53.00

ROTARY PISTON VACUUM PUMPS



Piston Pumps- Single Stage

DURAVAC Series **RP** Rotary Piston vacuum pumps are heavy duty INDUSTRIAL GRADE pumps capable of producing an ultimate vacuum of 10 microns abs (0.010 mm Hg).

These pumps are made for harsh & demanding applications where high resistance to abrasion and corrosion is required. Better able to ingest solvents, water vapor, corrosive gasses and even particulates than rotary vane type pumps, they are the pumps of choice for those looking for a durable, trouble-free and long lasting pump.

Typical applications include metallurgical heat treating, coating, melting, degassing, altitude chambers, high voltage transformer drying, chemical processing, pharmaceuticals and others.

FEATURES

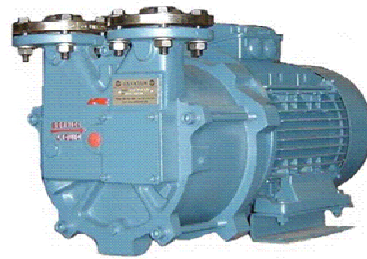
- No metal to metal contact
- Long lasting & durable
- Full pumping speed down to 1 Torr
- Absolute pressures to 0.010 Torr
- Over 50 years of proven reliability



SPECIFICATIONS

Pump Model		RP-150	RP-300
Displacement	CFM	150	300
Ultimate Vacuum	Torr	10 microns (0.010 mm Hg)	
Motor	Hp	7.5	10
Pump Speed	RPM	500	500
Oil Capacity	Gal	4	12
Inlet connection	in.	3" Flg	4" Flg
Exhaust connection	in.	2" NPT	3" Flg
Cooling H2O @ 60 Deg	GPM	1	2
Pump Weight	Lbs.	950	1750

LIQUID RING VACUUM PUMPS



Liquid Ring- Single Stage

CLOSE COUPLED PUMPS 20-145 CFM Vacuum to: 29" Hg

U.S. VACUUM LRV/C Series Liquid Ring Vacuum Pumps

- Close Coupled design
- Compact for O.E.M. applications
- Liquid Handling Capability
- Vacuum to 29" Hg
- Oil Free operation

US VACUUM LRV/C single stage CLOSE-COUPLED pumps are small compact units made for O.E.M. applications and where space is limited. These units ruggedly designed and made for continuous duty operation in production environments.

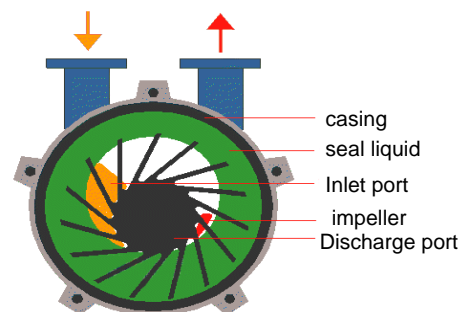
Typical applications are extruders, dental offices, central vacuum systems, sterilization systems, solvent recovery, vacuum hold down and soil remediation.

FEATURES

- Oil free discharge
- Only one moving part
- Very low maintenance
- Capable of handling wet gases



CLOSE COUPLED



TECHNICAL DATA

PUMP TYPE		LRV20C	LRV 35C	LRV 55C	LRV 75C	LRV 100C	LRV 150C
Nominal Capacity	CFM	18	32	46	66	95	135
Speed	RPM	3500	3500	3500	1750	1750	1750
Motor-Installed power	HP	1.5	3	5	5	7.5	10
Noise level at 60 Torr	db(A)	69	70	71	68	69	72
Average service liquid flow	GPM	1	1.5	2.5	5	5	5
Inlet/Outlet connection	Inches	1"	1"	1.5"	1.5"	1.5"	1.5"
Maximum Vacuum	Torr	25 TORR (29" Hg)					
Weight	Lbs	40	57	91	156	233	244
PRICE	USD	\$1,675	\$1,780	\$2,195	\$2,630	\$3,420	\$4,180

MATERIALS OF CONSTRUCTION:

LRV20C/35C/55C = CAST IRON CASING & BRONZE IMPELLER

LRV75C/100C/150C = CAST IRON CASING & 304 STAINLESS STEEL IMPELLER

Liquid Ring- Single Stage

CLOSE COUPLED

35 CFM Vacuum to: 29" Hg

- Close Coupled design
- Oil Free Discharge
- Liquid Handling Capability
- Vacuum to 29" Hg
- 316ST Wetted Internals

U.S. VACUUM LRV/TCS Series Liquid Ring Vacuum Pumps

The pump is provided with threaded connections for suction/ discharge, service liquid, pump draining and a vacuum relief valve. The NEMA 182TC frame allows for the selection of a variety of STANDARD motors including explosion-proof, single phase or TEFC.

Typical applications include chemical distillation, extruders, sterilization systems, solvent recovery, vacuum hold down and soil remediation.

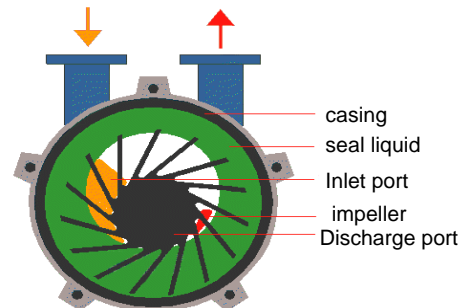
STAINLESS STEEL WETTED PARTS



PUMP WITH EXPLOSION
PROOF MOTOR



PUMP HEAD ONLY



TECHNICAL DATA

PUMP TYPE		LRV35TCS
Nominal Capacity	CFM	35
Speed	RPM	3500
Motor-Installed power	HP	3
Noise level at 60 Torr	db(A)	73
Average service liquid flow	GPM	2
Inlet/Outlet connection	Inches	1"
Maximum Vacuum	Torr	25 TORR (29" Hg)
Weight	Lbs	90

Water Sealed System

- Vacuum to 29" Hg
- High liquid Handling Capability
- Able to ingest large amounts vapors and particulates
- Low Cost

LRW/C Series Water Sealed System

The LRW systems are completely packaged water sealed systems using fresh water as it's seal fluid. The system can ingest large amounts of liquid slugs and dust without harming the pump. The system consists of the vacuum pump, motor, coupling, separator tank, recovery piping and instrumentation. The unit works by supplying fresh water to the pump which is then discharged into the separator tank and then to drain.



Model	Pumping Capacity cfm	Ultimate Vacuum "Hg	Noise Level dba	Motor Hp	Pump Speed RPM	Water Usage GPM	Suction Connection	Water Connection NPT
LRW 35/C	32	29" Hg	70	3	3450	.75	1"	1/4"
LRW 55/C	46	29" Hg	71	5	3450	1.25	1.5"	3/8"
LRW 75/C	66	29" Hg	68	5	1750	2.5	1.5"	1/2"
LRW 100/C	95	29" Hg	69	7.5	1750	2.5	1.5"	1/2"
LRW 150/C	135	29" Hg	72	10	1750	2.5	1.5"	1/2"

Pricing includes: Pump, motor, separator tank, water supply piping, flow control, isolation valve, inlet check valve, vacuum gauge, temperature gauge.

Pumps are close coupled design (Model LRW/C)

Liquid Ring- Single Stage

US VACUUM LRV/FC 330-800 CFM Vacuum to: 29" Hg

US VACUUM LRV/FC pumps are single stage large capacity liquid ring vacuum pumps capable of producing a vacuum to 29" Hg . A continuous supply of service liquid, usually water, is required by the pump to carry away the heat of compression and to maintain the liquid ring as some of the service liquid is discharged with the gas through the pump discharge port.

Various materials of construction are available for the pump to meet almost all gas compositions. Standard construction is Cast iron casing W/ Ductile iron impeller or Cast iron casing w/ 304 stainless steel impeller. All 316 stainless steel is also available.

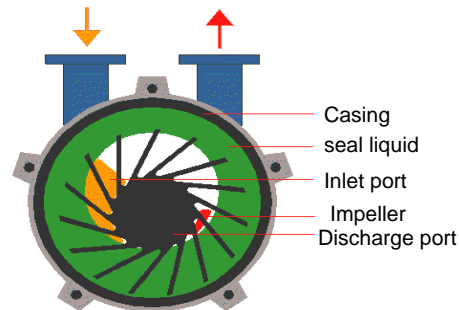
Pumps are provided with threaded connections for service liquid, pump draining and vacuum relief valve. Optional items include inlet check valve, vacuum relief valve, flow control, solenoid valve, vacuum and temperature gauges.

Various seal liquids may be used depending on the application. Call US Vacuum for assistance.

FEATURES

- Maintenance free
- Virtually vibration free
- Efficient Single Stage Design
- Almost all gases & vapors can be pumped
- The gases being pumped can be saturated with vapor
- Compression of the gases being pumped is nearly isothermal

VACUM TO 29" Hg



TECHNICAL DATA

PUMP TYPE		LRV300	LRV400	LRV500	LRV700	LRV800
Nominal Capacity (@ 25" Hg)	CFM	330	420	500	735	800
Speed	RPM	790	980	1170	1170	1300
Motor-Installed power	HP	25	30	40	60	75
Drive		BELT	BELT	DIRECT	DIRECT	BELT
Average service liquid flow *	GPM	7.5	9	11	14	15
Seal Fluid connection	Inches	1" NPT				
Inlet/Outlet connection	Inches	5" ANSI				
Maximum Vacuum	Torr	25 TORR (29" Hg)				
Weight (Pump & Motor)	Lbs	1870	2035	2100	2400	2550

- Seal fluid rate is based on partial water recirculation (50%).
- Partial water recovery is accomplished via special porting inside the vacuum pump

U.S. VACUUM OIL SEALED LIQUID RING

Full Sealant Recovery System—OSR SERIES

OSFR Series Full Sealant Recovery System

- Completely self contained
- Vacuum to 29.5" Hg
- No contaminating discharge
- Durable for long life
- Available in Air or Water cooled versions.

The OSR systems are completely packaged closed looped Oil sealed vacuum systems capable of producing a vacuum to 29.5" Hg. The system is completely self contained and comes in either AIR cooled or WATER cooled versions. The system consists of: high vacuum liquid ring pump, 3 Stage high efficiency discharge oil separator tank/filter assembly, heat exchanger, temperature gauges, solenoid valve, inlet check valve, inlet particulate vacuum filter, vacuum gauge, vacuum relief valve and 460V control panel.



Model	Nominal Capacity ACFM	Ultimate Vacuum "Hg	Noise Level dba	Motor Hp	Pump Speed RPM	Suction Connection (NPT)	Approximate Dimensions (in) L X W X H	Approximate Weight LBS
LRV-75C OSR	70	29" Hg	68	5	1750	1.5"	44 X 18 X 32	560
LRV-100C OSR	105	29" Hg	69	7.5	1750	1.5"	44 X 18 X 32	640
LRV-150C OSR	150	29" Hg	72	10	1750	1.5"	44 X 18 X 32	650

DRY VACUUM PUMPS

-DRYVAC



Vane Pumps- Single Stage

DRYVAC SERIES

5.6-353 CFM

Vacuum to: 27" Hg

DV Series Rotary Vane Dry Vacuum Pumps



Model VT 4.8
Displacement 5.6 CFM
Ultimate Pressure 25.5" Hg

The DV series of pumps are 100% oil-less rotary vane vacuum pumps. They are designed to operate on a continuous basis at any point from atmospheric pressure to a vacuum level of 22.5—27" Hg depending on the pump model. The oil-less pumps are ideal for applications where oil or water sealed pumps are objectionable.

The pumps are direct drive units and are supplied with TEFC electric motors, inlet filter, vacuum relief valve, vibration isolators and discharge silencers (as required).

Applications include graphic arts, vacuum packaging, forming, hold-down, robotics, material handling, air sampling, central vacuum systems and others.



Model VT 4.16
Displacement 11 CFM
Ultimate Pressure : 26.5" Hg



Model KVT 3.100
Displacement 95 CFM
Ultimate Pressure: 27" Hg



Model VTLF 500
Displacement 353 CFM
Ultimate Pressure : 25" Hg

DRY VAC DV SERIES

MODEL	VT 4.8	VT 4.16	VT 4.25	VT 4.40	KVT 3.80	KVT 3.100	VTLF 250	VTLF 400	VTLF 500
Displacement, CFM	5.6	11	18	28	48	69	173	280	353
Max Cont. Vacuum ("Hg)	25" Hg				27" Hg		25" Hg	22.5 " Hg	
Motor, Kw	.56	.94	1.2	2	5		10	18	24
Suction Connection	3/8"	1/2"	3/4"		1"	1-1/2"	2"	4"	
Speed (RPM)	3300	1740				1150		850	1150
Weight, Lbs	24	50	57	85	178	230	865	1090	1100
Noise Level dBa	59	64	67	72	75	77	81	78	83

VACUUM GAUGES

- TORR Gauge
- UTILITY Gauges
- THERMOCOUPLE

VACUUM GAUGES

DIAL "TORR" GAUGES

0-20, 0-40, 0-100 & 0-760 Torr



- Barometrically compensated
- Large 4" Dial face with divisions in Torr
- All metal gauge: No mercury or liquid to contaminate the system
- Great for low pressure measurement
- Accuracy: +/- 2% full scale deflection

US Vacuum TORR gauges are HIGHLY ACCURATE, barometrically compensated, capsule type, absolute pressure gauges. Each gauge has a dual absolute pressure scale, reading in both millibars (mbar) and Torr (mm Hg). To ensure high accuracy, all bearings are set in jewels, which provide exceptionally smooth pointer movement. Each gauge is individually calibrated at every point on both increasing and decreasing pressure.

All gauges are machined from solid brass bar stock and assembled with an O-ring sealed tempered glass face, beryllium copper sensing element and aluminum pointer & dial plate. Virtually no hysteresis is present. Four (4) ranges are available to meet both laboratory & Industrial applications.

Gauge Ranges: 0-20; 0-40; 0-100 & 0-760 Torr (mm Hg)

HIGH ACCURACY

TORR GAUGES

MODEL USCG	USCG-20	USCG-40	USCG-100	USCG-760
RANGE	0-20 TORR	0-40 TORR	0-100 TORR	0-760 TORR
SCALE DIVISIONS	1 TORR	1 TORR	2 TORR	10 TORR
DISPLAY	4"	4"	4"	4"
CONNECTION	1/4" NPT	1/4" NOT	1/4" NPT	1/4" NPT
PRICE	\$450	\$450	\$450	\$450

VACUUM GAUGES

DIAL "UTILITY" GAUGES

0-30" Hg



- Accuracy within 2% full scale
- Rugged Bourdon tube design
- Dry or Liquid filled construction
- Available with solid safety front
- Available in Brass or stainless steel

U.S. Vacuum utility gauges utilize a bourdon tube design. As the system pressure varies, the bourdon tube contracts and operates a mechanism which rotates the pointer over a graduated scale calibrated in inches of mercury.

These are production duty gauges made to withstand the vibration and corrosive effects common with production duty equipment.

STANDARD CONSTRUCTION GAUGES

MODEL VGBB	VGBB-25	VGBB-40
RANGE	0-30"	0-30"
DISPLAY	2-1/2"	4"
CONNECTION	1/4" NPT	1/4" NPT
PRICE	\$45.00	\$80.00

STAINLESS STEEL GAUGES

MODEL VGBS	VGBS-25	VGBS-40
RANGE	0-30"	0-30"
DISPLAY	2-1/2"	4"
CONNECTION	1/4" NPT	1/4" NPT
PRICE	\$60.00	\$90.00

VACUUM GAUGES

THERMOCOUPLE GAUGES

1 mTorr to Atmosphere



- Vacuum Range 760 Torr to .001 Torr
- Wide Range for constant pressure monitoring
- Operates with line voltage 115-220V, 50/60Hz
- Simple and low cost
- 1 Yr warranty

US Vacuum thermocouple gauge are easy to use, highly accurate and durable. The gauge comes with digital indicator, 10 ft. cable w/ connector, power cord & sensor.

THERMOCOUPLE GAUGE

MODEL	200W-531
DESCRIPTION	WIDE RANGE Thermocouple Vacuum Gauge
PRESSURE RANGE	760 Torr to 0.001 Torr
CALIBRATION	AIR OR NITROGEN
ACCURACY	2%
RESPONSE TIME	Less than 1 Sec. from 1-2000 microns
	10 Sec from ATM to 1 micron
ANALOG OUTPUT	0-5 VDC into 10 ohms minimum
GAUGE TUBE	1/8" NPT
LINE POWER	115-220, 50 or 60Hz
GAUGE TUBE CABLE	9 Ft. standard
POWER CORD	4 FT 2 wire line cord
WEIGHT	0.5 Lbs
GAUGE PRICE	\$395.00

VACUUM FILTERS

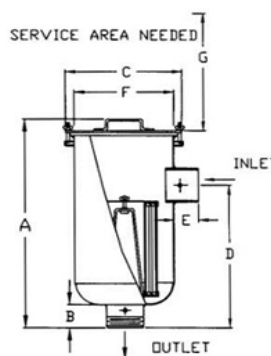
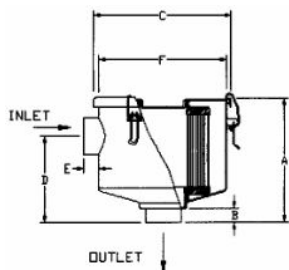
- PARTICULATE
- LIQUID TRAPS
- CLEANABLE
- OIL EXHAUST

VACUUM FILTERS

INLET FILTERS - PARTICULATE



- Positive O-ring seal system
- Vacuum rating to 0.001 Torr
- Capacity rating to 1100 CFM
- Comes in 1/2" to 6" connection size
- ALL steel construction w/ enamel finish
- Choose from paper or polyester media



U.S. Vacuum INLET FILTERS are right angle high strength all steel vacuum filters made to protect vacuum pumps from damaging particulate matter. Filters offer low pressure drop along with a large dirt holding capacity and easy field Cleaning.

Options include epoxy or stainless steel construction, activated carbon pre-filter To reduce odor, vacuum gauge to measure pressure drop thru the housing and various media available.

MODEL "VFI"	CFM	Inlet/Outlet	A	C	D	E	F	WEIGHT	PRICE
VFISL-843050	20	0.5	3.62	3.75	1.87	0.56	3.5	0.88	\$145
VFISL-843075	25	0.75	4.37	5.87	2.50	0.56	5	3	\$175
VFISL-849100	40	1	6.50	7.31	4.50	0.75	6.81	5	\$175
VFISL-849125	60	1.25	6.50	7.31	4.50	0.75	6.81	5	\$195
VFISL-849150	80	1.50	6.50	7.31	4.50	0.75	6.81	5	\$195
VFISL-851200	175	2	10.25	8.75	5	0.75	7.62	15	\$395
VFISL-851250	210	2.50	10.50	8.75	5.50	1.25	7.62	15	\$395
VFISL-239300	300	3	15.75	13.25	8.75	2.87	12	33	\$890
VFISL-235400	500	4	27.12	14	18.50	3	12	52	\$890
VFISL-245500	800	5	28.12	18.50	19.50	3	16	82	\$1105
VFISL-275600	1100	6	29.12	18.50	20.50	4	16	110	\$1175

VACUUM FILTERS

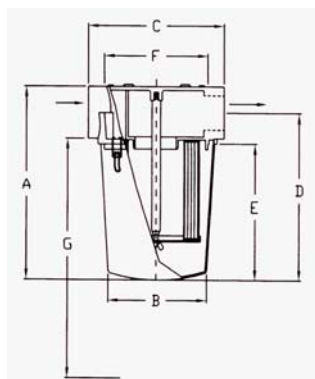
INLET FILTERS - PARTICULATE "T" STYLE



- Integrated Baffle
- Compact "T" Style Design
- Black carbon steel bucket
- "Drop Down" housing for easy servicing
- Cast Aluminum heads RESISTS corrosion
- See through buckets on 3" & 4" sizes



See Through Bucket



U.S. Vacuum "T" Style INLET FILTERS are straight-thru light weight vacuum filters made to protect vacuum pumps from damaging particulate matter. Filters offer low pressure drop along with a large dirt holding capacity and easy field Cleaning.

The convenient "drop-down" bucket design allows for easy field cleaning and servicing of the filter. Options include a **SEE THROUGH** bucket on the 3" & 4" designs allowing for visual inspection of the filter and collected particulates..

MODEL "CT"	CFM	Inlet/Outlet	A	B	C	D	E	F	G	WEIGHT	PRICE
VFICT-851200	175	2"	13	7-5/8	9	10-7/8	9	5-5/8	18	16	\$420
VFICT-851250	210	2-1/2"	13	7-5/8	9	10-7/8	9	5-5/8	18	16	\$445
VFICT-235300	300	3"	18-7/8	9-7/8	13-1/2	16-1/8	13	10	25	30	\$540
VFICT-235400	500	4"	18-7/8	9-7/8	13-1/2	16-1/8	13	10	25	30	\$565
VFICT-275500	800	5"	18-1/4	16	19	14-3/8	9-7/8	14-3/4	20	50	\$995
VFICT-275600	1100	6"	18-1/4	16	19	14-3/8	9-7/8	14-3/4	20	50	\$995

See Through Bucket Design

VFIST-235300	300	3"	19-7/8	9-7/8	13-1/2	17-1/8	14	10	25	30	\$780
VFIST-235400	500	4"	19-7/8	9-7/8	13-1/2	17-1/8	14	10	25	30	\$780

VACUUM FILTERS

INLET FILTERS - SEE THRU

175-520 CFM



- Positive O-ring seal system
- Vacuum rating to 0.5 Torr
- Capacity rating to 520 CFM
- Comes in 2", 2-1/2", 3" & 4" sizes
- Polyester or wire mesh elements
- NON rusting material construction

U.S. Vacuum SEE-THRU VACUUM INLET FILTERS are straight thru vacuum filters made to protect vacuum pumps from damaging particulate matter. Filters utilizes a polyester or cleanable stainless steel mesh media to capture contaminates. Excellent choice for food processing, wood working and other applications where a Visible and cleanable (w/ wire mesh element) filter is required.

Filters comes with vacuum gauge port on top of the assembly for installation of a vacuum gauge.

SEE-THRU INLET FILTERS

MODEL "VFST"	CFM	DIMENSIONS (H x W)	CONNECTIONS	PRICE
VFIST-851200	175	7.625 X 9	2" NPT	\$455
VFIST-851250	210	7.625 X 9	2-1/2" NPT	\$485
VFIST-235300	300	9.875 X 13.50	3" NPT	\$675
VFIST-235400	520	9.875 X 13.50	4" NPT	\$685

LIQUID SEPARATOR

LIQUID TRAP/FILTER COMBINATION UNIT

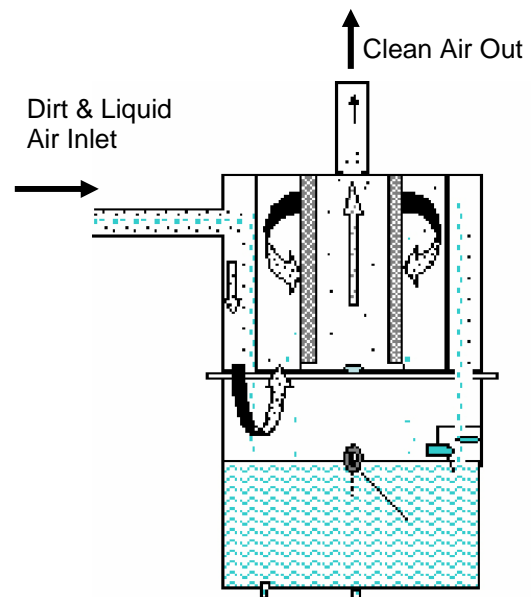


- Prevents Liquid slugs from entering the vacuum pump
- Acts as Both Liquid Knock-out pot & Particulate filter
- Polyester filter w/ 5 micron particle retention
- 99% Liquid removal efficiency
- 1" port for liquid level inspection
- Carbon Steel construction
- Blue Epoxy coating

U.S. Vacuum LIQUID SEPARATORS are excellent choices for applications where large slugs of liquids need to be prevented from entering the vacuum pump. Capturing these liquids before they can enter the vacuum pump will reduce pump failure, oil degradation, and production downtime.

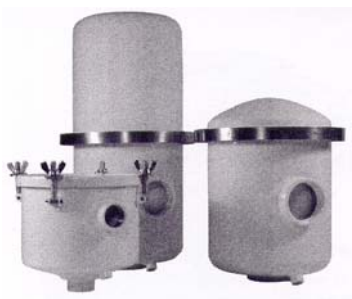
The separators can be used on all types of vacuum pumps including Liquid Ring, Piston, Vane, Screw and Side channel blowers.

MODEL "LS"	CFM	Inlet/Outlet	PRICE
LS-19075	25	3/4"	\$1150
LS-19100	40	1"	\$1150
LS-19125	60	1-1/4"	\$1150
LS-19150	80	1-1/2"	\$1150
LS-237200	180	2"	\$1,990
LS-237250	220	2-1/2"	\$1,990
LS-237300	300	3"	\$1,905
LS-237400	400	4"	\$3,620
LS-275600	800	6"	\$3,720



VACUUM FILTERS

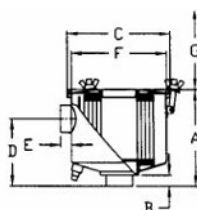
EXHAUST FILTERS - ROTARY PISTON PUMPS



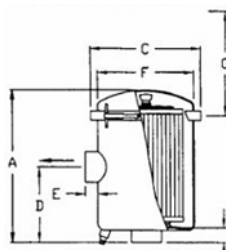
- Positive O-ring seal system
- Comes with 1/4" drain tap
- Captures 99.9% of all oil smoke, mist and fog from the pump discharge
- Pleated filter element provides increased surface area for low back pressure

U.S. Vacuum EXHAUST FILTERS are RIGHT ANGLE coalescing discharge filters for oil flooded vacuum pumps. The filters utilizes a fiberglass media to capture the oil mist, and drain it back to the vacuum pump for recirculation.

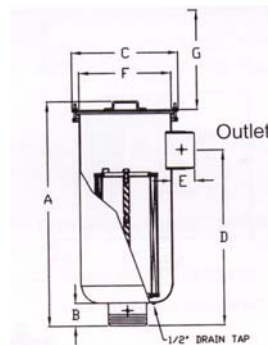
Filter include element, housing (steel), inlet/outlet connection and oil drain tap. Filters are also offered in stainless steel and epoxy or Teflon coating.



Up to 1 1/2" Connection



2" to 2 1/2" Connection



MODEL	CFM	Inlet/Outlet	A	C	D	E	F	WEIGHT	PRICE
VFSG-848125	40	1.25	6.75	7.31	4.62	.75	6.75	5	\$335
VFSG-850200	125	2	11.25	8.75	5	.75	7.62	15	\$645
VFSG-850250	200	2.5	18	8.75	5.50	1.25	7.62	30	\$775
VFSG-344300	300	3	31.12	14	22.50	3	12	75	\$1550
VFSG-344400	500	4	31.12	14	22.50	3	12	78	\$1550
VFSG-474500	800	5	38.12	18.50	29.50	3	16	160	\$1900
VFSG-474600	1100	6	39.12	18.50	30.50	4	16	160	\$2280

VACUUM FILTERS

EXHAUST FILTERS - KF/ISO Connections



- Captures oil fog, mist or smoke from exhaust of oil lubricated vacuum pumps
- Back pressure valve for pump safety
- Captures 99.97% of all oil smoke,
- Pleated filter element provides increased surface area for low back pressure
- 1/8" NPT oil drain
- COMPACT , low profile design
- Rugged all steel construction

U.S. Vacuum "EE" EXHAUST FILTERS are coalescing discharge filters for oil flooded vacuum pumps. The filters come with "KF-ISO" inlet/exhaust flanges for easy assembly & disassembly. Filter include high efficiency pleated filter element, housing (steel), KF/ISO inlet/outlet connection and oil drain tap. Options include: Stainless steel constructions and activated carbon elements for odor Removal.

EE Exhaust Filters

MODEL	INLET	NOMINAL	PRICE
		CFM	
EE-GL915-NW16	NW16	10	\$195.00
EE-GL915-NW25	NW25	10	\$196.00
EE-GL925-NW25	NW25	20	\$345.00

FLUIDS

AND

OILS

-US VACUUM

-FOMBLIN

FLUIDS & OILS

Best Value

HYDROCARBON - SYNTHETIC



U.S. Vacuum offers excellent high grade synthetic pump oils that exhibit low vapor pressure and have been specially formulated for harsh duty applications.

ALL of our vacuum pump oils are refined from group 2 & 3 P.A.O. base stocks that have better oxidation resistance and higher thermal stability than solvent refined oils. These oils are an ideal choice for Rotary Piston and Rotary Vane vacuum pumps where high heat and contaminate levels are present.

U.S. Vacuum Synthetic pump oil reduces sludge build-up, varnish, and premature thermal breakdown resulting in fewer oil changes and longer service life of the pumps

OIL NAME	VISCOSITY SUS @ 100 Deg. F	CONTAINER SIZE	PRICE \$
US 350SS-01	350	1 GALLON	\$40.00
US 550SS-01	550	1 GALLON	\$40.00
US 350SS-05	350	5 GALLON	\$140.00
US 550SS-05	550	5 GALLON	\$140.00
US 350SS-55	350	55 GALLON	\$995.00
US 550SS-55	550	55 GALLON	\$995.00

* Detergent additives available on request

VISCOSITY SELECTION:

350 SUS: Two Stage rotary piston and Two-Stage Rotary vane vacuum pumps.
Also, Kinney KD & KDH series of pumps.

550 SUS: Single Stage Rotary Vane vacuum pumps and KT Series Kinney vacuum pumps

FLUIDS & OILS

FOMBLIN (PFPE)



FOMBLIN perfluoropolyether (PFPE) fluids are excellent choices for applications where a chemically inert pump fluid is required.

Fomblin provides a cost effective solution to difficult pumping problems where corrosive gasses, acids and oxygen enriched atmospheres are present.

Fomblin Y fluids are a mixture of fluorinated polymers obtained by a photochemical process that begins with hexafluoropylene. Since the FOMBLIN chemical chain contains only carbon, fluorine, and oxygen atoms, the PFPEs have exceptional properties such as:

- Low vapor pressure
- Chemical inertness
- Non-flammability
- Low Toxicity
- Excellent compatibility with metals, plastics, elastomers

FOMBLIN PFPE FLUIDS

FLUID NAME	FOMBLIN	FOMBLIN	FOMBLIN
	Y06/6	Y16/6	Y25/6
Viscosity @ 20 Deg C	60	160	276
@ 40 Deg C	25	48	80
Price 1 Kg	\$225.00		
Price 2 Kg	\$450.00		
Price 8 Kg	\$1,760.00		

REBUILDING SERVICES

-BUSCH

-KINNEY

- Rebuild Kits available for ALCATEL, BECKER, BUSCH, EDWARDS, LEYBOLD, KINNEY, STOKES & WELCH

REBUILDING SERVICES

KINNEY VACUUM PUMPS



US VACUUM PUMPS, INC provides repair and overhaul services for a wide variety of mechanical vacuum pumps and boosters. All pumps are rebuilt at our suburban Chicago location and each leaves with a 90 day warranty. Pumps rebuilt undergo the following:

- Disassembly, inspection and cleaning
- Total replacement of all seals, bearings, gaskets & o-rings
- All other parts replaced as required, with customer approval, for an extra charge
- Two or more changes of hydrocarbon oil
- Complete test run for 24 hours
- Thorough draining & cleaning
- Painting & final tagging with rebuild information

KINNEY

MODEL#	PRICE
KC5/8	\$698.00
KC-15	\$895.00
KTC-21	\$1070.00
KD-30	\$1078.00
KTC-35	\$1090.00
KD-50	\$1085.00
KTC-60	\$1,650.00
KDH-130	\$1,890.00
KT-150	\$2,050.00
KT-300	\$2,380.00
KT-500	\$2,750.00
KT-850	\$3,700.00

KINNEY

MODEL#	PRICE
KT-120LP	\$1,550.00
KT-170LP	\$1,575.00
KT-190LP	\$1,575.00
KT-275LP	\$1,950.00
KT-505LP	\$2,180.00
KT-840	\$2,650.00
KT-1350	\$3,400.00

KINNEY

MODEL#	PRICE
KLRC-40	\$978.00
KLRC-75	\$995.00
KLRC-100	\$1155.00
KLRC-125	\$1,420.00
KLRC-200	\$1,645.00
KLRC-300	\$2,240.00
KLRC-525	\$2,590.00
KLRC-526	\$2,690.00

prices include Viton seals

Add \$345 for oxygen prepared pumps (fluid not included)
 Sizes 5 to 130 cfm

KINNEY

MODEL#	PRICE
KMBD-200/400C	\$2,220.00
KMBD-540/720C	\$2,395.00
KMBD-850/1200C	\$2,650.00
KMBD-1600/2000C	\$2,720.00

mechanical seal boosters
C-Face drive units

KINNEY

MODEL#	PRICE
KMBD-200/400	\$1,565.00
KMBD-540/720	\$1,580.00
KMBD-850/1200	\$1,700.00
KMBD-1600/2000	\$1,970.00

slinger seal boosters
belt drive units

KINNEY

MODEL#	PRICE
KMBD-200/400	\$1,990.00
KMBD-540/720	\$2,225.00
KMBD-850/1200	\$2,350.00
KMBD-1600/2000	\$2,720.00

mechanical seal boosters
belt drive units

REBUILDING SERVICES

BUSCH VACUUM PUMPS



US VACUUM PUMPS, INC provides repair and overhaul services for a wide variety of mechanical vacuum pumps and boosters. All pumps are rebuilt at our suburban Chicago location and each leaves with a 90 day warranty. Pumps rebuilt undergo the following:

- Disassembly, inspection and cleaning
- Total replacement of all seals, bearings, vanes, gaskets & o-rings
- All other parts replaced as required, with customer approval, for an extra charge
- Two or more changes of hydrocarbon oil
- Complete test run for 24 hours
- Thorough draining & cleaning
- Painting & final tagging with rebuild information

BUSCH

MODEL#	PRICE
RA/RC-0025 (pump)	\$ 990
RA/RC-0040 (pump)	\$ 1390
RA/RC-0063 (pump)	\$ 1550
RA/RC-0063 (module only)	\$ 990
RA/RC-0100 STANDARD (pump)	\$1,550
RA/RC-0100 STANDARD (module only)	\$1,220
RA/RC-0100 WATER COOLED (pump)	\$2,800
RA/RC-0100 WATER COOLED(module only)	\$2,250
RA/RC-0160 (pump)	\$2,680
RA/RC-0160 (module only)	\$1,750
RA/RC-0250 (pump)	\$2,650
RA/RC-0250 (module only)	\$1,650
RA/RC-0250C (pump)	\$2,935
RA/RC-0250C (module only)	\$2,350
RA/RC-0400 (pump)	\$3,850
RA/RC-0400 (module only)	\$2,700
RA/RC-0630 (pump)	\$3,950
RA/RC-0630 (module only)	\$2,750
WV-1000 BOOSTER	\$2,650

Cylinder machining available on R5 pumps sizes 160 thru 630.....Call for pricing

VACUUM CONVERSION TABLE

Torr	mbar	"HgV	"HgA	psia	% Vacuum
760	1013	0	29.921	14.69	0
750	999.67	0.39	29.527	14.5	1.32
700	993.03	2.36	27.559	13.54	7.89
600	799.74	6.29	23.622	11.6	21.05
500	666.45	10.23	19.68	9.67	34.21
400	533.18	14.17	15.74	7.73	47.37
380	506.5	14.96	14.96	7.35	50
300	399.87	18.11	11.81	5.8	60.53
200	266.58	22.04	7.87	3.87	73.68
150	199.93	24.01	5.91	2.9	80.26
100	133.29	25.98	3.94	1.93	86.84
90	119.96	26.37	3.54	1.74	88.16
80	106.63	26.77	3.15	1.54	89.47
70	93.3	27.16	2.76	1.35	90.79
60	79.97	27.56	2.36	1.16	92.11
50	66.64	27.95	1.97	0.97	93.42
40	53.32	28.34	1.58	0.77	94.74
30	39.99	28.74	1.18	0.58	96.05
25.4	33.86	28.92	1	0.49	96.66
20	26.66	29.13	0.78	0.39	97.37
10	13.33	29.53	0.39	0.19	98.68
7.6	10.13	29.62	0.29	0.14	99
1	1.33	29.88	0.04	0.02	99.87
0.75	0.99	29.89	0.03	0.01	99.9
0.5	0.66	29.9	0.02	0.009	99.93
0.1	0.13	29.91	0.004	0.002	99.98
0.01	0.01	29.92	0.0004	0.0002	99.99
0	0	29.921	0	0	100

ORDERING INFORMATION

US VACUUM PUMPS LLC

TOLL FREE:

Chicago: 888-416-7366

Dallas: 888-416-7466

FAX: 877-416-7599

EMAIL: USVACUUM@EARTHLINK.NET

INTERNET: WWW.USVACUUMPUMPS.COM

INVOICE REMIT TO ADDRESS:

US VACUUM PUMPS LLC

P.O. BOX 909

CANTON, TX 75103

Hours of Operation: 7:30 AM - 4:30 PM (CENTRAL STANDARD TIME)

NO MINIMUM ORDER

VISA & Mastercard accepted

Delivery:	Stock items normally ship the same day, provided order is placed by 3:00 P.M. (CST)
F.O.B.	All shipments are F.O.B. Canton, TX, unless otherwise quoted
Shipping:	Freight or UPS prepaid and added, unless otherwise quoted
Payment	NET 30 Days upon credit approval. All other payments C.O.D.
Terms	
Warranty:	1 year on materials and workmanship on new equipment
RMA#'s:	When shipping to us for any reason, a "Return Merchandise Authorization" number required
Restocking Fees:	Items being returned other than for warranty/replacement are subject to a restocking fee
Prices:	Prices shown are in U.S. Dollars. Prices are current at press time, but subject to change without notice.

TRADEMARKS

SOGEVAC:	Registered trademark of LEYBOLD VAKUUM GmbH
DUOSEAL, DIRECTORR:	Registered trademarks of WELCH VACUUM, THOMAS INDUSTRIES
PASCAL:	Registered trademark of ALCATEL
FOMBLIN:	Registered trademark of Ausimont SpA
KINNEY:	Registered trademark of TUTHILL VACUUM SYSTEMS
VITON:	Registered trademark of DUPONT DOW ELASTOMERS

NOTES



CHICAGO SALES OFFICE

888-416-7366

Fax: 630-466-5578

DALLAS HEADQUARTERS

888-416-7466

Fax: 877-416-7599

www.usvacuumpumps.com